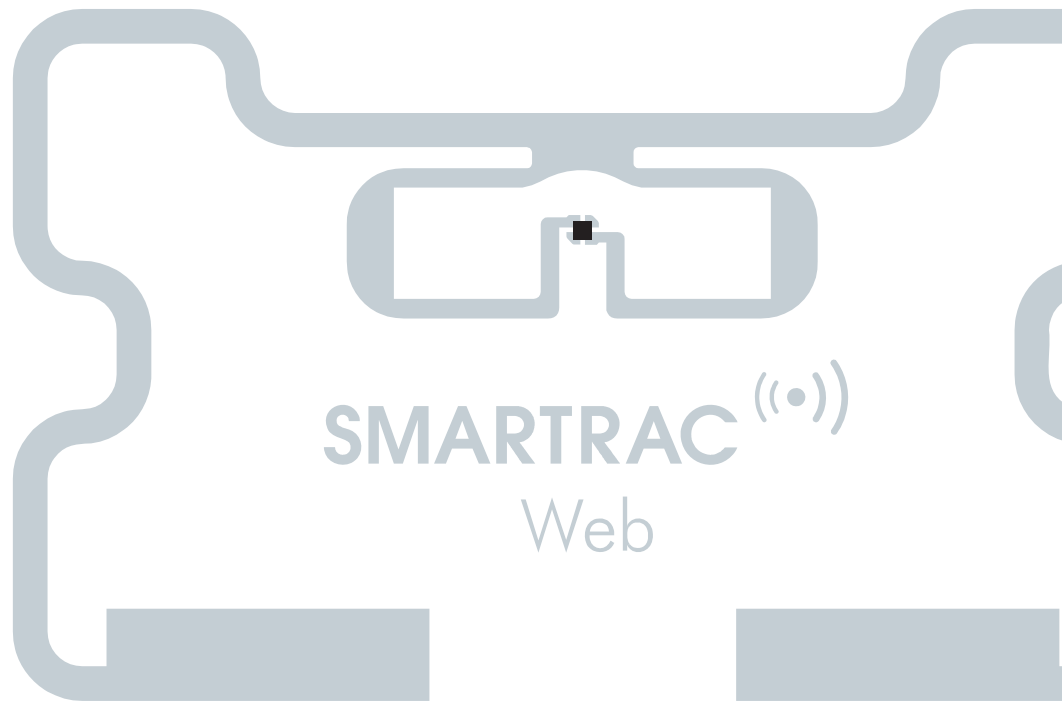
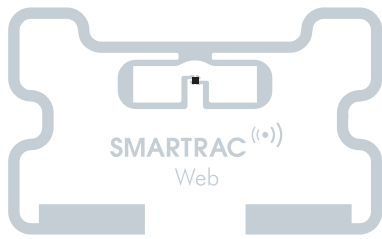


# SMARTRAC



## Web™

|                            |  |
|----------------------------|--|
| <b>Protocol</b>            | EPC Class 1 Gen 2<br>ISO 18000-6C  |
| <b>Operating frequency</b> | Global 860–960 MHz   |
| <b>Antenna size</b>        | 30 x 49 mm / 1.2 x 1.9 inch  |
| <b>Web™ key features</b>   | <ul style="list-style-type: none"><li>• Optimized size and shape for hang tags in apparel applications.</li><li>• Great material for low cost apparel hang tags and care labels.</li><li>• Improved design of the already established Web™ products.</li><li>• Excellent performance even when stacked in close proximity.</li><li>• Unique TID.</li></ul> |



# SMARTRAC

## Web™

### Antenna dimensions

|              |                           |
|--------------|---------------------------|
| Antenna size | 30 x 49 mm / 1.18 x 1.95" |
| Die-cut size | 34 x 54 mm / 1.34 x 2.13" |
| Web width    | 40 mm / 1.58"             |

### Electrical specifications

|                     |                  |
|---------------------|------------------|
| IC                  | Impinj Monza 4   |
| EPC memory          | 128 bit + 32 bit |
| Operating frequency | 860-960 MHz      |

### General characteristics of inlay

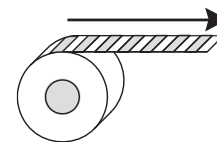
|                       |                                     |
|-----------------------|-------------------------------------|
| Operating temperature | -40 °C to 85 °C<br>-40 °F to 185 °F |
| Bending diameter (D)  | > 50 mm<br>tension max. 10 N        |
| Static pressure (P)   | <10 MPa                             |

### Delivery formats

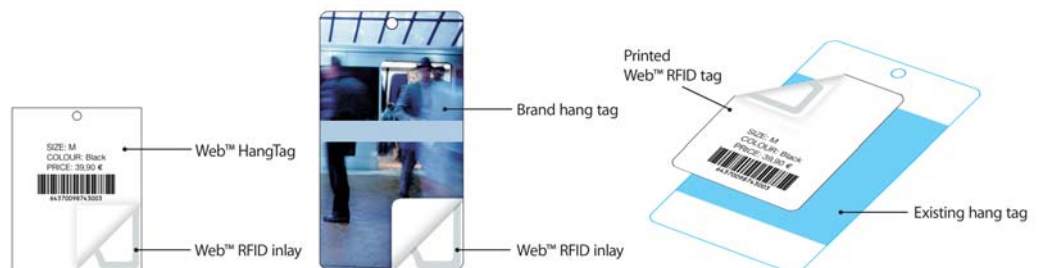
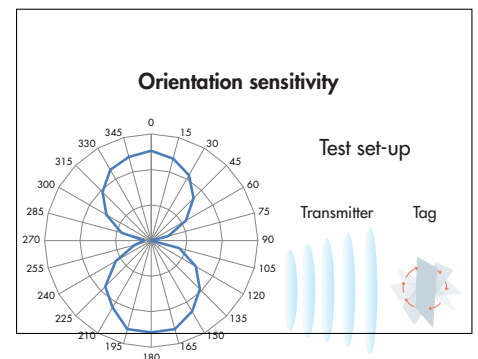
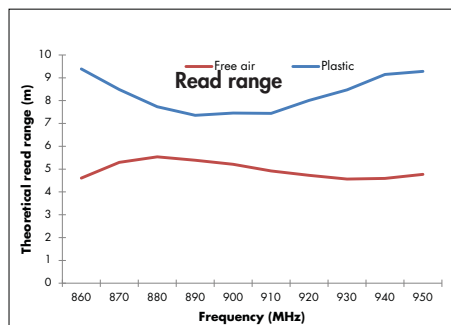
|                        |   |
|------------------------|---|
| Available formats      | Dry, wet, tag   |
| Adhesive - temperature | Solvent-free permanent adhesive<br>min. -20 °C to 80 °C<br>min. -4 °F to 176 °F |
| Quality                | 100% performance tested   |

### Reel details

|                    |  |
|--------------------|--|
| Standard reel size | 5,000 dry inlays, wet inlays<br>2,000 tags |
|--------------------|--|



Inner core diameter 76 mm / 3 inch



SMARTRAC TECHNOLOGY GROUP uses three different test methods to evaluate the reliability of the RFID inlay and tag products it produces. Products are tested according to IEC 60068-2-67 (temperature and humidity), JESD22-A104-B (temperature cycling) and an in-house developed bending test.

#### Disclaimer

SMARTRAC TECHNOLOGY GROUP reserves the right to change its products and services at any time without notice. Our recommendations are based on our latest knowledge and experience. As our products are used in circumstances beyond our control, we cannot be held liable for any damage caused through their use.