



# Tamper Evident RFID Label

RFID Product • Custom Designs Available • Tamper- Evident • Barcode & Variable Data

## Technical Data Sheet Part: #WF- SM-0041

### General Description

#### Tamper Evident RFID Label



Locate and identify sensitive documents, folders and envelopes. In addition to all the benefits of RFID, this label provides immediate detection of obvious tampering. This cost- effective polyester film has a pressure- sensitive adhesive and printed pigment that irreversibly separates into two colors upon attempted removal. Customers can specify colors (i.e., purple into blue & red, green into blue & yellow) and size. Suitable for a wide variety of low energy surfaces.

#### Trackable Security Seal

This RFID- enabled film seals and deters anyone from tampering or opening sensitive materials or items. Upon tampering, the film splinters and fractures into two distinct colors with one color affixed to the source.

- RFID for unique data tagging
- Quick inspection: Irreversible color change leaving an obvious footprint of tampering.
- Available Pre- Printed & Encoded or Blank
- Optional serialization with barcodes
- Customize color, color- fractures, size and message.

### Applications

Identification Labeling, Safety & Compliance, Tamper Evident Seals, Security, Anti- Fraud, Anti- Counterfeit, Document Security

### Material Description

#### Tamper Evident Film

*Custom graphics or designs available*

Material Description:	Tamper Evident Film
Tag Type:	Passive Read/ Write
Film Thickness:	1.5 mil
Available Colors:	Purple or Green
Water Resistance:	Fair
Solvent Resistance:	Fair
Abrasion Resistance:	Fair

### RFID Performance

*Customizable with various inlays and size*



RFID Protocol:	EPC Class 1 Gen 2
Operating frequency:	860– 960 MHz (Global)
Antenna size:	93 x 5mm / 3.7 x 0.2inch
IC:	NXPU- Code G2iL
EPC memory:	128 bit
Operating Temperature:	-40°F-185°F (-40°C to 85°C)

## Adhesive

Low temperature adhesive

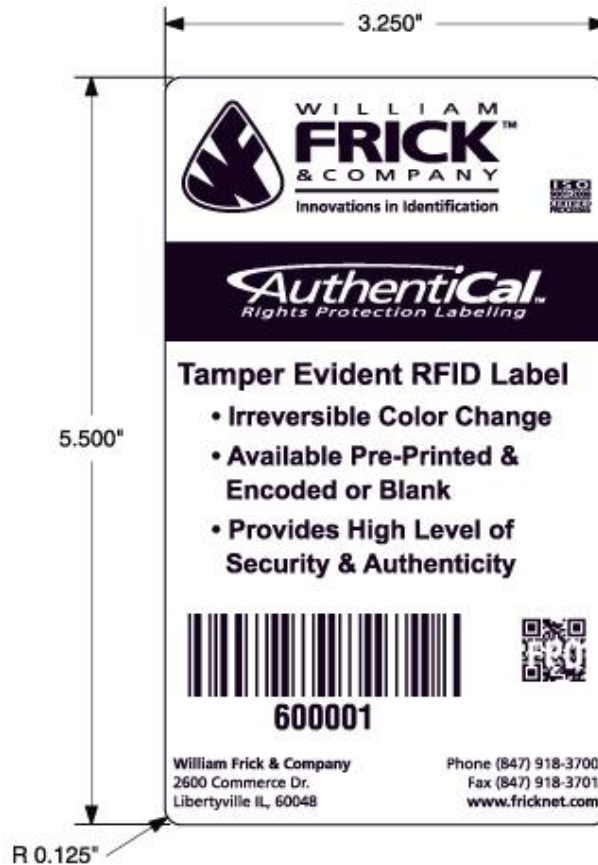
### Tamper Evident RFID Label Adhesive

Minimum Application Temperature:	32°F
Thickness:	1 mil
Adhesion to Glass at 72 hr. dwell:	Excellent
Adhesion to LSE plastics:	Fair
Adhesion to HSE plastics:	Very Good

## Shelf life

### Stored at 72°F / 50% Relative Humidity

2 years



ALL DIMENSIONS ARE IN INCHES  
UNLESS OTHERWISE SPECIFIED  
TOLERANCES  
3 PLACE DECIMAL + OR-.005"  
2 PLACE DECIMAL + OR-.02"

Contact No.

**William Frick & Co.**

[www.fricknet.com](http://www.fricknet.com)

DWG.

Test product for system compatibility as individual application conditions can impact results. William Frick Co. does not assume any responsibility or liability for any advice furnished by it, or for the performance or results of any installation or use of the product(s) or any final product into which the product(s) may be incorporated by the purchaser and/ or user. The purchaser and/ or user should perform its own tests to determine the suitability and fitness of the product(s) for the particular purpose desired in any given situation.



**William Frick & Company**

2600 Commerce Dr. Libertyville, IL 60048 Ph: (847) 918-3700

Email: [sales@fricknet.com](mailto:sales@fricknet.com) [www.fricknet.com](http://www.fricknet.com)

1 PLACE DECIMAL + OR-.1"  
MAX SURFACE ROUGHNESS  
ALL MACHINED SURFACES  
EXCEPT AS NOTIFIED

BREAK SHARP EDGES AND CORNERS  
.010" MAX

Engr.
Chk.
Aprvd.

### Tamper Evident RFID Label

Size.	DWG No. WF- SM-0041	Rev.
-------	------------------------	------

