

# Access Control RFID Products



Controlling vehicle access to individual locations – whether it’s corporate facilities, gated communities or downtown parking lots – can be a challenge. Eliminate the need for on-site staff and the hassle of stopping for a card reader with Metalcraft’s Access Control RFID Products.

Both products feature a subsurface digital printing process, which ensures crisp details on even the most complex logos for maximum clarity. Four color processing is also available, combined with double-sided registered options for limitless design and color options.

## RFID Windshield Tag

Unlike other windshield tags on the market, the Metalcraft RFID Windshield Tag utilizes passive RFID technology offering a more economical option to the active windshield tags available. Encased between thin layers of polyester, the specialized inlay doesn’t require a standoff to read either through or on a glass windshield. This product provides a read range of approximately 18+ feet.\* A tamper-evident option with strategically placed slits in the label and adhesive layers is also available at no additional cost.

## Rearview Mirror RFID Hang Tag

Like the RFID Windshield Tag, the Rearview Mirror Tag is an optimal choice for access control in parking lots, gated communities and anywhere vehicles come and go. The logo and bar codes are subsurface printed on thicker polyester for durability and rigidity. Like the RFID Windshield Tag, the Rearview Mirror RFID Tag provides excellent read range. Perfect for temporary access control applications when you need to avoid permanent attachment to the windshield. Completely removable and reusable.

## Key Product Features

- Specialized inlays read well both attached to and through windshield glass
- Read ranges of 18+feet\*
- Unlimited color options with choice of up to four standard or custom colors,
- Digital printing process provides for greater print capability with detailed logos or special designs
- High frequency (HF) RFID Tags available
- Double-sided registered option available

\*Read range differs by environment and reader type

Not sure what product you need?  
Call our trained Experts!

800-437-5283



149 4th Street SW • P.O. Box 1468  
Mason City, IA 50401-1468  
www.idplate.com  
E-mail: metalcraft@idplate.com



# Access Control RFID Products Specifications

**Windshield Tag Construction:** Specialized RFID inlay encapsulated between .002" thick white polyester; approximately .024" total product thickness.

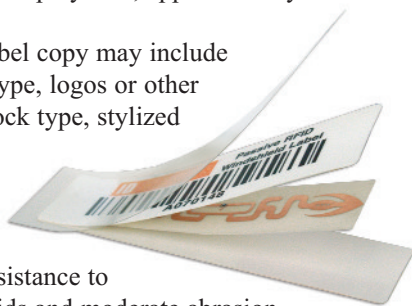
**Rearview Mirror Tag Construction:** Specialized RFID inlay encapsulated between .003" laminated thick polyester laminated to .010" thick polyester; approximately .026" total product thickness.

**Label Copy:** The label copy may include block type, stylized type, logos or other designs. All copy, block type, stylized type, logos, designs, and bar code are subsurface printed.

This unique process provides excellent resistance to solvents, caustics, acids and moderate abrasion.

**Colors:** Standard colors include black, red, yellow, green and blue. Due to contrast needed for the bar code scanner, all bar codes are black.

**Serialization:** Bar code and human-readable equivalent is produced using the latest high-resolution digital



technology available, which provides excellent clarity and easy scanning. Code 39 is the standard symbology with a range of 2.7 to 9.4 CPI (characters per inch). Optional symbology is Code 128.

The bar code and human readable can be programmed into the RFID inlay as long as the information is in decimal or hexadecimal format. The programmed information can be locked, which prevents the RFID inlay from being rewritten. Metalcraft can encode up to 24 characters into the RFID inlay. If desired, Metalcraft can encode information that differs from the bar code and human readable.

**Frequency Range (both products):** UHF = 860-960 MHz; HF = 13.56 MHz

**Windshield Tag Standard Sizes:** 4 x 1", 4 3/8 x 1 1/8"

**Rearview Mirror Tag Standard Sizes:** 3 1/2 x 3 1/2", 3 1/2 x 6 1/2"

**Windshield Tag Standard Adhesive:** .002" thick low surface energy, pressure-sensitive adhesive (MC71FL)

**Rearview Mirror Tag Affixing Method:** Hanging tag

**Shipment:** Approximately 15-25 work days (for either product) depending on order quantity and inlay availability.

**To Order:** Call **1-800-437-5283** and ask for an ID Specialist

## Test Results

These tests were conducted for a limited period of time in strict laboratory conditions. In order to achieve maximum satisfaction we highly recommend that any customer considering use of this product test the labels in the environment in which they will be used.

**Read Range Test:** Tag has a read range of 18 ft using AR400 portal reader at 24 dbm (1/4 of maximum reader power) and has a read range of 21 ft using Symbol MC906R handheld reader at 30 dbm (full power).

**Temperature Test:** Tag performs in temperature range of -13°F to 175°F. Note: Tag performance is limited to performance range of inlay.

**Label Adhesion Test:** This rating measures label adhesion after being exposed to chemicals listed below for a 2 hour soak.

Test Conditions	Rating
Isopropyl Alcohol	100
Acetone	25
Water	100
Bath Soap	100
Pyroil Brake Fluid	25
Glass Cleaner	100

Chemical emergence tests are rated on a scale of 100 to 0:

100 = No Effect                      25 = Label Falls Off  
75 = Oozing Adhesive              0 = Label Destroyed  
50 = Label Slides Off



149 4th Street SW • P.O. Box 1468  
Mason City, IA 50401-1468  
www.idplate.com  
E-mail: metalcraft@idplate.com